

# Maintenance Kit-#3G58941

## Table of Contents

- 1 ..... Periodic Maintenance
- 1 ..... Moisture Indicator Replacement
- 2 ..... Lubrication
- 2 ..... Filter Change
- 3 ..... Pump Breakdown
- 4 ..... Moisture Indicator
- 5 ..... Filter Breakdown
- 6 ..... Female Coupling
- 7 ..... Spool Gaskets
- 8 ..... Kit #3G58941
- 9 ..... Valve Rebuild Instructions
- 10 ..... Valve Breakdown

## HR-1301 / HFC-227 SERVICE AND MAINTENANCE

The 3G58941 maintenance kit provides spare parts, filters, and lubricants to perform basic maintenance, repair, and service to the Getz HR-1301 / HFC-227 recovery/recycle machine. Maintaining your equipment will help provide a long productive service life to this machine.

**BEFORE STARTING REMOVE ALL PRESSURE FROM THIS EQUIPMENT**  
**FOLLOW YOUR COMPANY LOCKOUT TAGOUT PROCEDURES**

### WEEKLY

Clean all strainers  
Inspect gaskets and quick connects for damage or excess wear

### MONTHLY

Lubricate item (1) inner spool using Haskel lube, part number 1G51515  
Lubricate item (2) quick connects using Visilox o'ring lube, part number 1G51516  
Inspect all fittings and connections for halon leaks using an approved leak detector

### YEARLY

Change filter cores (item 3)  
Change moisture indicator (item 4)  
Lubricate air drive piston (item 5) using 1G51515 Haskel lube  
Lubricate pilot stems (item 6) using 1G51515 Haskel lube  
Check the recovery tank hydrostatic test date and follow DOT regulations

---

### MOISTURE INDICATOR REPLACEMENT

Item 4 Refer to page 4

Remove the old indicator  
Lubricate the o'ring on the new indicator with 1G51516 lube  
Install the new indicator

## **LUBRICATION**

### **Item (1) Refer to page 3**

Remove the plug, muffler, brass elbow, and retaining bushing  
Using the wooden dowel rod provided, push item (1) spool out  
Inspect the o'rings for wear and damage. Replace if necessary using repair kit, part number 1G51445  
Apply a light coat of 1G51515 lube and carefully replace the spool  
Reassemble

### **Item (2) Refer to page 4**

Inspect o'ring seal for damage or wear. Replace with seal kit # 54252 if needed.  
Apply a light coat of 1G51516 lube to the male quick connect and attach the female, item (2)

### **Item (5) Refer to page 3**

Remove the bolts and nuts as shown on page 3  
Remove the head and barrel.  
With a clean dry rag, clean the barrel, o'ring, and piston  
Apply a heavy coat of lube, 1G51515, to the o'ring and barrel  
Reassemble

### **Item (6) Refer to page 3**

#### **NOTE: PILOT STEMS CANNOT BE SWITCHED. REMOVE ONE AT A TIME**

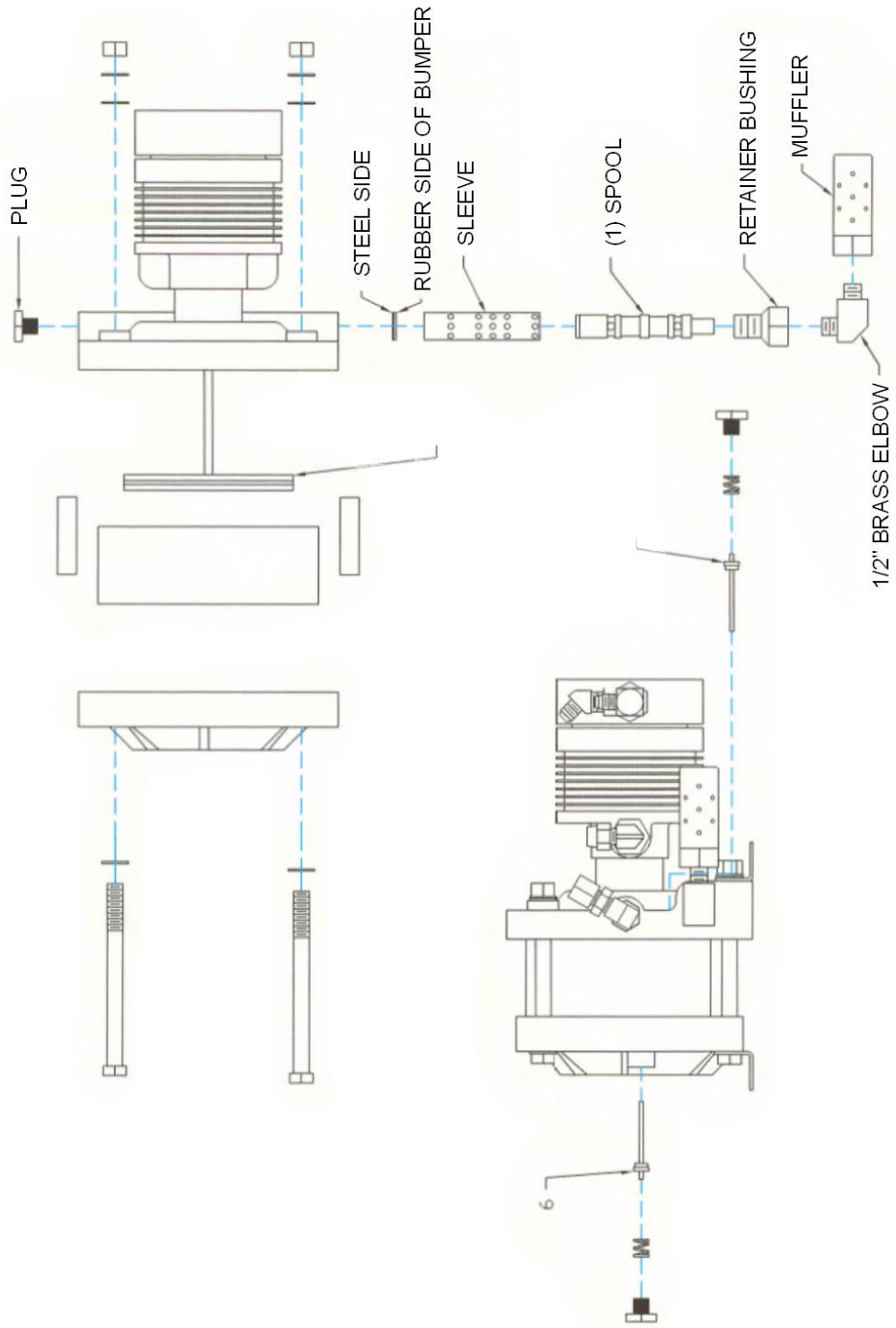
Remove the cap located in the head shown on page 3  
Remove the spring  
Using needle nose pliers, remove the pilot stem  
Inspect for damage or wear and replace if needed  
Apply a light coat of 1G51515 lube  
Reassemble

## **FILTER CHANGE**

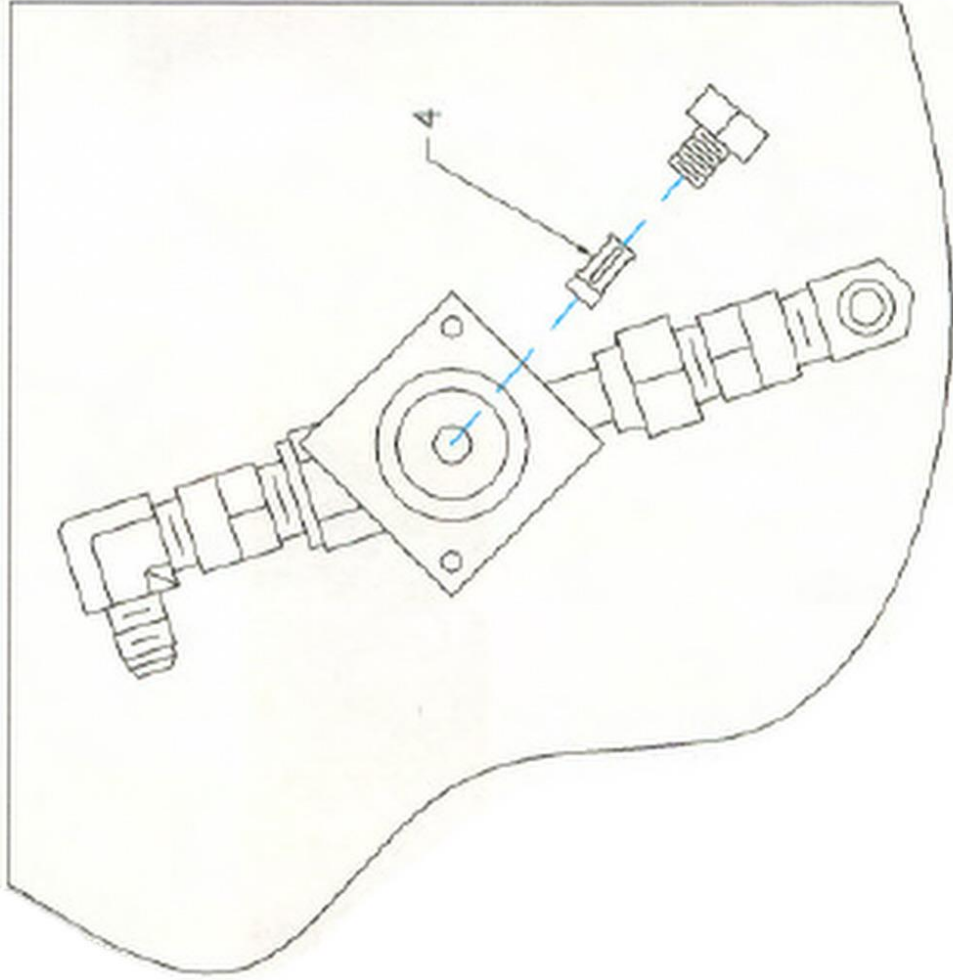
### **Item (3) Refer to page 5**

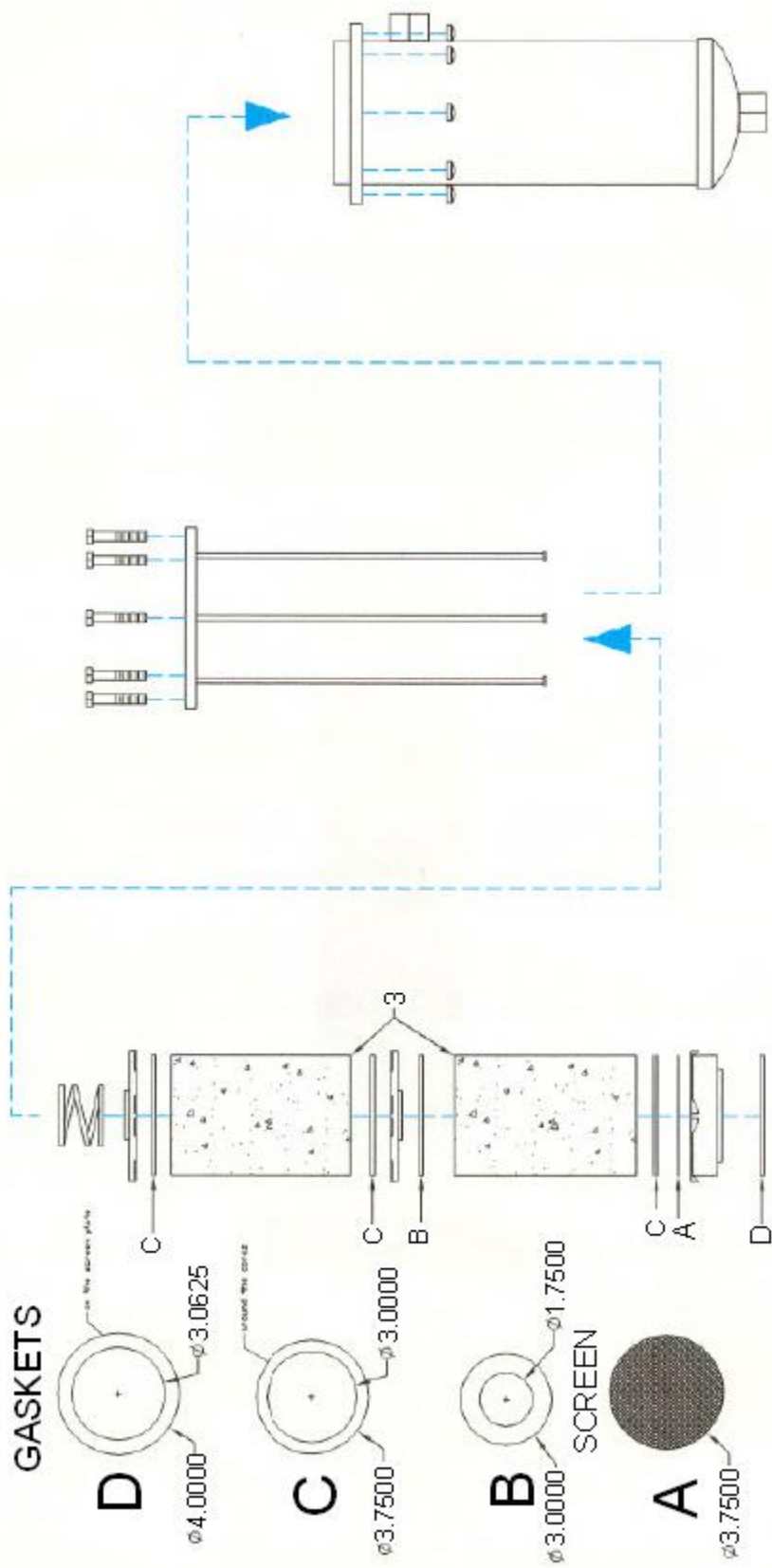
#### **NOTE: DO NOT OPEN FILTERS UNTIL READY TO INSTALL**

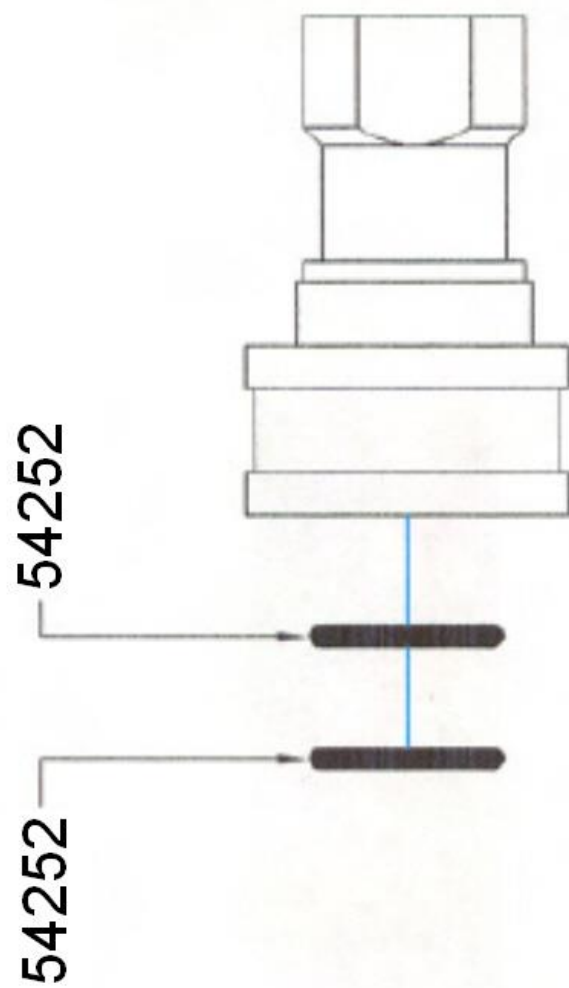
Remove the bolts from the filter canister and remove the filter assembly  
Depress the filters and slide the screws from the slots  
Remove the old filters and gaskets  
Replace the old gaskets with new gaskets found inside the filter containers  
Install the new filters  
Depress the filters and attach the screws in the slots  
Replace the assembly in the canister and tighten bolts in a crisscross pattern



UNDERSIDE OF CONTROL PANEL

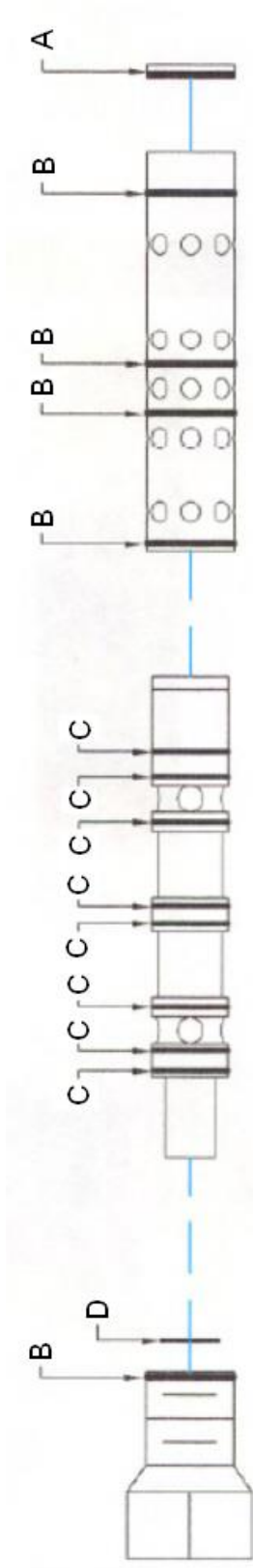






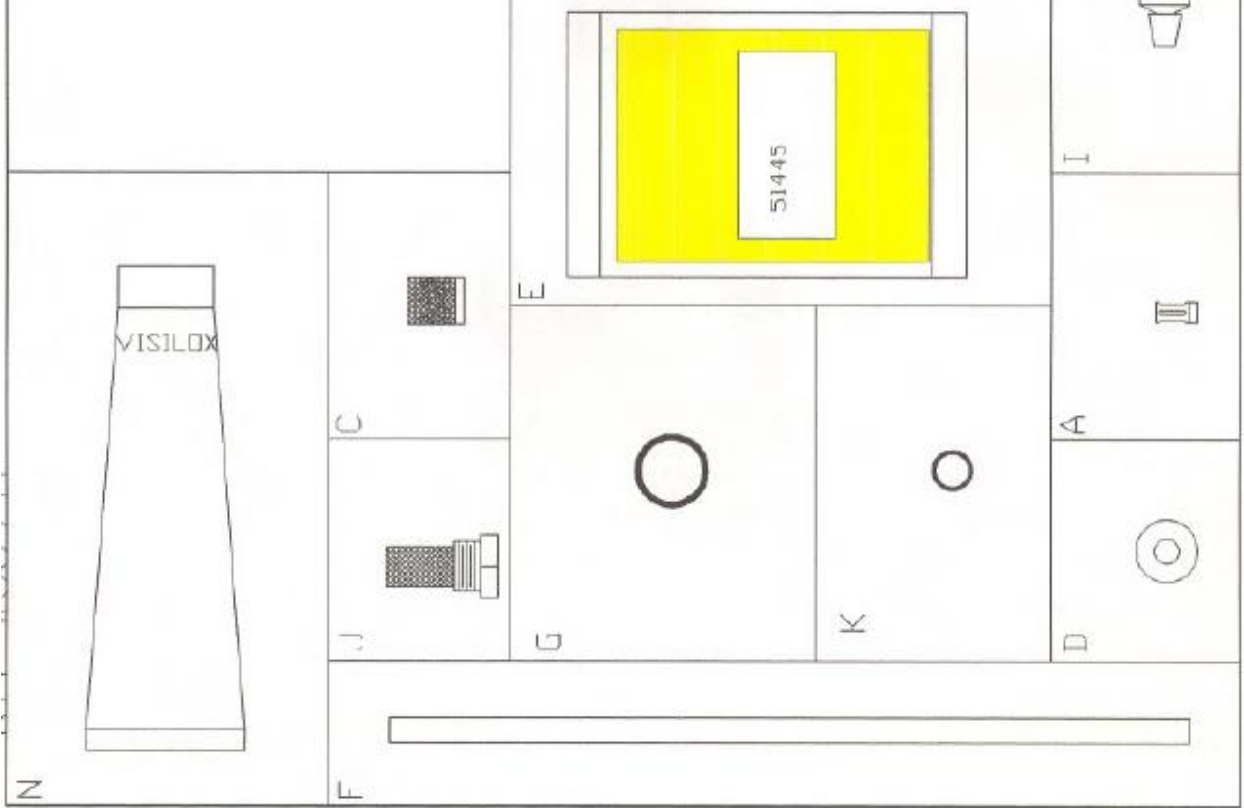
#	PART #	DESCRIPTION	U/M	QTY
A	17524	RUBBER/STEEL BUMPER	EA	1
B	568020	SLEEVE O'RINGS	EA	5
C	568017	SPOOLO'RINGS	EA	8
D	568015	RETAINER BOLT INNER O'RING	EA	1

**NOTE: THIS IS KIT 1G51445**





#	PART #	DESCRIPTION	U/M	QTY
A	3G58800	KIT SPORLAN MOISTURE EYE	EA	1
B	1G0418	CORE FILTER ELEMENT	EA	2
C	1G52534	FILTER ELEMENT NURPO STRAINER	EA	1
D	3G58820	WASHER TEFLON .375 CGA	EA	2
E	1G51445	KIT REPAIR CONTROL VALVE HASKEL	EA	1
F	3G58846	ROD DOWEL 3/8 HASKEL SPOOL	FT	1
G	1G54252	ORING O/CONN FEMALE 1/2 FSTR	EA	8
H	XXXXX	NOT USED	EA	0
I	1G51515	LUBE SEAL HR-1 PUMP AIR	EA	1
J	1G52535	FILTER W/NUT SPORLAN STRAINER	EA	1
K	1G58835	ORING STRAINER CAP	EA	1
L	1G52540	1301 SELECTOR VALVE REPAIR KIT	EA	1
M	1G53013	NICKEL THREAD TAPE	EA	1
N	1G51516	VISILOX V-711 O'RING LUBE	EA	1



## 52287 SELECTOR VALVE REBUILD INSTRUCTIONS

### 1. DISCHARGING SYSTEM PRESSURE

Remove the pressure from the system by pumping into an empty cylinder. Using a large cylinder that has been pulled to a vacuum will give you the best results, but several smaller cylinders can be used. Check both pressure and discharge gauges for pressure before proceeding (REFER TO PAGE 19 OF YOUR MANUAL)

### 2. REMOVING THE SELECTOR VALVE

Number or color code the hoses and valve fittings before disconnecting.

Remove the valve handle # 22 and the panel mount screws.

**IMPORTANT:** File the set holes on #14 valve shaft.

### 3. DISASSEMBLING THE VALVE

A clean surface should be used when disassembling the valve. Small parts needed for re-assembly will be free to fall out and care should be taken when separating the valve body. Remove bolts #12 and slowly separate # 11 and # 20. **DO NOT FORCE** #14 shaft thru the valve body. File set screw holes again if shaft cannot be removed easily. Pin # 17 should not be removed from housing # 20.

### 4. REPLACING SEATS AND SEALS

Using an

O-ring pick and hook set remove and discard items 1 thru 7. Clean and inspect the remaining parts for excess wear or damage. Items 8 thru 10 are not included in this kit, but are available from Getz Equipment.

Replace O-ring # 5 on shaft # 14.

Replace O-rings # 3 on seats # 2 and apply a thin coat of o'ring lube.

Replace seat springs #1 and press seats # 2 into body # 11.

### 5. REASSEMBLING THE VALVE

A blowout drawing has been provided to show parts position and placement.

Place housing #20 flat and replace item # 17 (If needed) followed by ft 10 thru ft 6. Replace # 16 disc.

The # 8 ball will be in the center hole of # 16.

Replace # 14 shaft. Note the position of the setscrew holes in # 14. These holes must line up with # 22 handle in the off position.

Replace # 15 rotor over # 14 shaft.

Place # 4 O-ring in the groove of #11 body. A thin coat O-ring lube will help hold the O-ring in place.

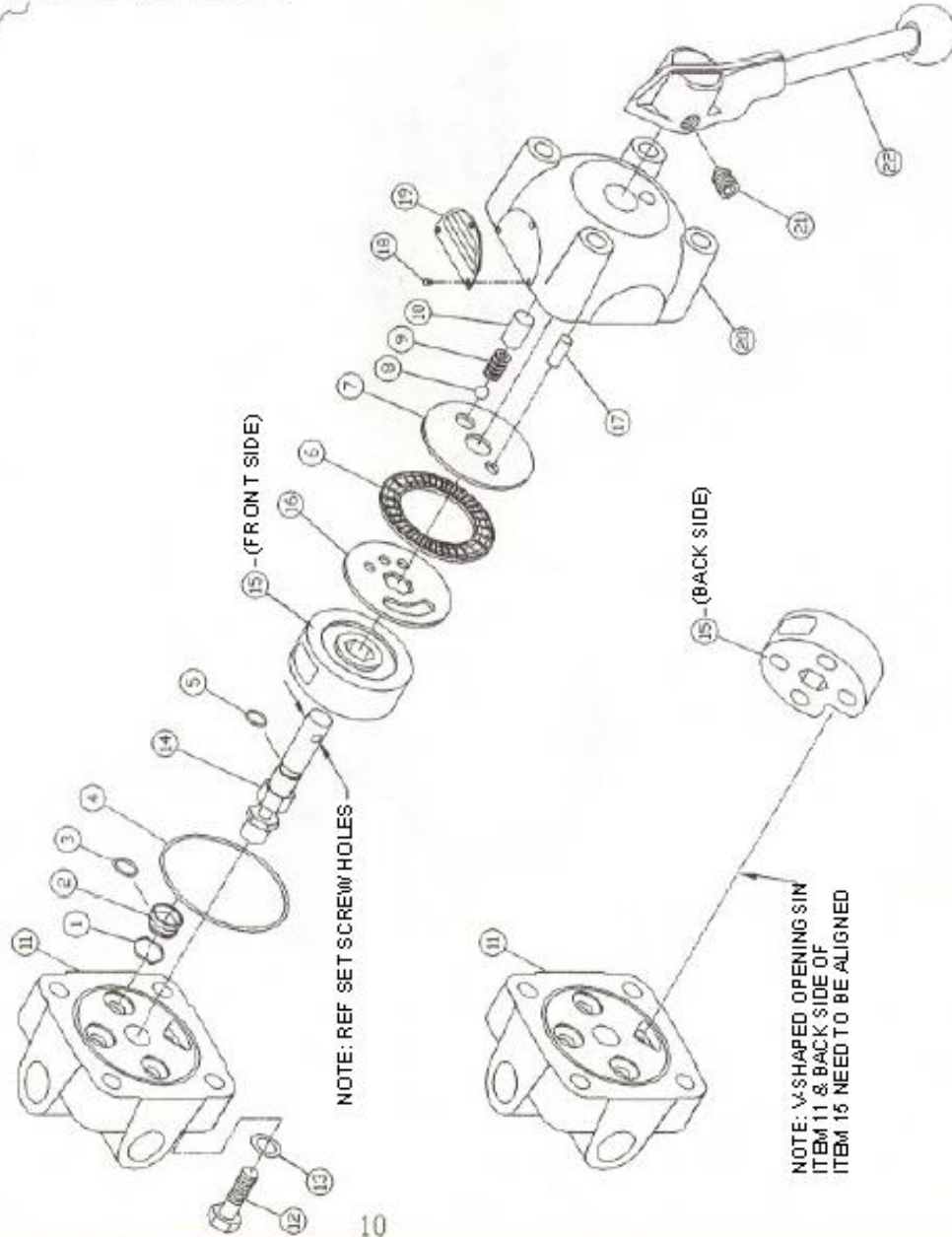
Reassemble body # 11 and housing # 20. Note the position of the alignment marks stamped into # 11 and # 20.

Replace bolts # 12 and washer

ITEM PART#	DESCRIPTION	UM	QTY
1	MISC WASHER-SHEAR SEAL SEAT SPRING	EA	3.0000
2	MISC SHEAR SEAL SEAT	EA	3.0000
3	MISC O-RING-SHEAR SEAL SEAT	EA	3.0000
4	MISC O-RING-HOUSING	EA	1.0000
5	MISC O-RING-SHAFT	EA	1.0000
6	MISC BEARING-NEEDLE THRUST	EA	1.0000
7	MISC THRUST WASHER	EA	1.0000
8	MISC-2 BALL-DETENT	EA	1.0000
9	MISC-2 SPRING-DETENT	EA	1.0000
10	MISC-2 SLEEVE-DETENT BALL	EA	1.0000
11	N/A BODY	EA	1.0000
12	N/A SCREW-BODY	EA	4.0000
13	N/A WASHER-BODY SCREW	EA	4.0000
14	N/A SHAFT	EA	1.0000
15	N/A ROTOR	EA	1.0000
16	N/A DISC DETENT	EA	1.0000
17	N/A PIN-STOP	EA	1.0000
18	N/A SCREW-NAMEPLATE	EA	3.0000
19	N/A NAMEPLATE	EA	1.0000
20	N/A HOUSING	EA	1.0000
21	N/A SET SCREW-HANDLE	EA	2.0000
22	N/A HANDLE	EA	1.0000

NOTE: ITEMS 1 THRU 8 ARE  
PART OF REPAIR KIT 1G52340

NOTE: ITEM'S 8 THUR 10 ARE OFFERED  
BUT ARE NOT PART OF REPAIR KIT



THIS DRAWING IS THE EXCLUSIVE AND CONFIDENTIAL PROPERTY OF JETC. IT SHALL NOT BE REPRODUCED, COPIED, OR DISCLOSED TO OTHERS WITHOUT THE EXPRESS WRITTEN CONSENT OF JETC.

REV	REVISIONS	DATE
001	ISSUED FOR REVISE	09-26-98
002	REVISED	09-26-98
003	REVISED	09-26-98
004	REVISED	09-26-98
005	REVISED	09-26-98
006	REVISED	09-26-98
007	REVISED	09-26-98
008	REVISED	09-26-98
009	REVISED	09-26-98
010	REVISED	09-26-98
011	REVISED	09-26-98
012	REVISED	09-26-98
013	REVISED	09-26-98
014	REVISED	09-26-98
015	REVISED	09-26-98
016	REVISED	09-26-98
017	REVISED	09-26-98
018	REVISED	09-26-98
019	REVISED	09-26-98
020	REVISED	09-26-98
021	REVISED	09-26-98
022	REVISED	09-26-98
023	REVISED	09-26-98
024	REVISED	09-26-98
025	REVISED	09-26-98
026	REVISED	09-26-98
027	REVISED	09-26-98
028	REVISED	09-26-98
029	REVISED	09-26-98
030	REVISED	09-26-98
031	REVISED	09-26-98
032	REVISED	09-26-98
033	REVISED	09-26-98
034	REVISED	09-26-98
035	REVISED	09-26-98
036	REVISED	09-26-98
037	REVISED	09-26-98
038	REVISED	09-26-98
039	REVISED	09-26-98
040	REVISED	09-26-98
041	REVISED	09-26-98
042	REVISED	09-26-98
043	REVISED	09-26-98
044	REVISED	09-26-98
045	REVISED	09-26-98
046	REVISED	09-26-98
047	REVISED	09-26-98
048	REVISED	09-26-98
049	REVISED	09-26-98
050	REVISED	09-26-98
051	REVISED	09-26-98
052	REVISED	09-26-98
053	REVISED	09-26-98
054	REVISED	09-26-98
055	REVISED	09-26-98
056	REVISED	09-26-98
057	REVISED	09-26-98
058	REVISED	09-26-98
059	REVISED	09-26-98
060	REVISED	09-26-98

REV	REVISED	DATE
001	ISSUED FOR REVISE	09-26-98
002	REVISED	09-26-98
003	REVISED	09-26-98
004	REVISED	09-26-98
005	REVISED	09-26-98
006	REVISED	09-26-98
007	REVISED	09-26-98
008	REVISED	09-26-98
009	REVISED	09-26-98
010	REVISED	09-26-98
011	REVISED	09-26-98
012	REVISED	09-26-98
013	REVISED	09-26-98
014	REVISED	09-26-98
015	REVISED	09-26-98
016	REVISED	09-26-98
017	REVISED	09-26-98
018	REVISED	09-26-98
019	REVISED	09-26-98
020	REVISED	09-26-98
021	REVISED	09-26-98
022	REVISED	09-26-98
023	REVISED	09-26-98
024	REVISED	09-26-98
025	REVISED	09-26-98
026	REVISED	09-26-98
027	REVISED	09-26-98
028	REVISED	09-26-98
029	REVISED	09-26-98
030	REVISED	09-26-98
031	REVISED	09-26-98
032	REVISED	09-26-98
033	REVISED	09-26-98
034	REVISED	09-26-98
035	REVISED	09-26-98
036	REVISED	09-26-98
037	REVISED	09-26-98
038	REVISED	09-26-98
039	REVISED	09-26-98
040	REVISED	09-26-98
041	REVISED	09-26-98
042	REVISED	09-26-98
043	REVISED	09-26-98
044	REVISED	09-26-98
045	REVISED	09-26-98
046	REVISED	09-26-98
047	REVISED	09-26-98
048	REVISED	09-26-98
049	REVISED	09-26-98
050	REVISED	09-26-98