

## HR-1L Service and Maintenance

The #3G58642 maintenance kit provides spare parts, filters, and lubricants to perform basic maintenance and service to the Getz HR-1L Halon 1211 recovery / recycle machine. Maintaining your equipment will help provide a long productive service life to this machine.

BEFORE STARTING REMOVE ALL PRESSURE FROM THIS EQUIPMENT FOLLOW YOUR COMPANIES LOCKPUT TAGOUT PROCEDURES.

### Weekly

Clean all strainers

Inspect gasket and quick connects for damage or excess wear

### Monthly

Lubricate item (1) inner spool.

Lubricate item (2) quick connects.

Inspect all fitting and connections for Halon leaks using an approved leak detector.

### Yearly

Change filter cores items (3).

Change moisture indicator item (4).

Lubricate air drive piston item (5).

Lubricate pilot stems items (6).

Check the recovery tank hydrostatic test date and follow DOT regulations.

MOISTURE INDICATOR REPLACEMENT – Kit content shown on page 6

Item 4 refer to page 4

\*Remove the old indicator

\*Lubricate the O ring on the new indicator (A) with (J) lube

\*Install the new indicator (A)

LUBRICATION - Kit contents shown on page 6

Item (1) refer to page 3

\*Remove the plug, muffler, bass elbow, and retaining bushing.

\*Using the wooden dowel rod (I) provided, push item (I) spool out.

\*Inspect the O rings for wear and damage, replace if necessary using Kit #8G51445 (not included)

\*Apply a light coat of (H) lube and carefully replace the spool.

\*Reassemble. (Retain bushing torque to 10 in lbs. max.)

Item (2) refer to page 4

- \*Inspect u cup seal for damages or wear. Replace with seal (G) if needed.
- \*Apply a light coat of (J) lube to the male quick connect (F) and attach the female item (E).

Item (5) refer to page 3

- \*Remove the bolts and nuts as shown on page 3.
- \*Remove the head and barrel
- \*With a clean dry rag, clean the barrel, O ring, and piston.
- \*Apply a heavy coat of (H) lube to the O ring and barrel.
- \*Reassemble (Torque to 16-18 ft. lbs. max.)

Item (6) refer to page 3

NOTE. PILOT STEMS CANNOT BE SWITCHED. REMOVE ONE AT A TIME.

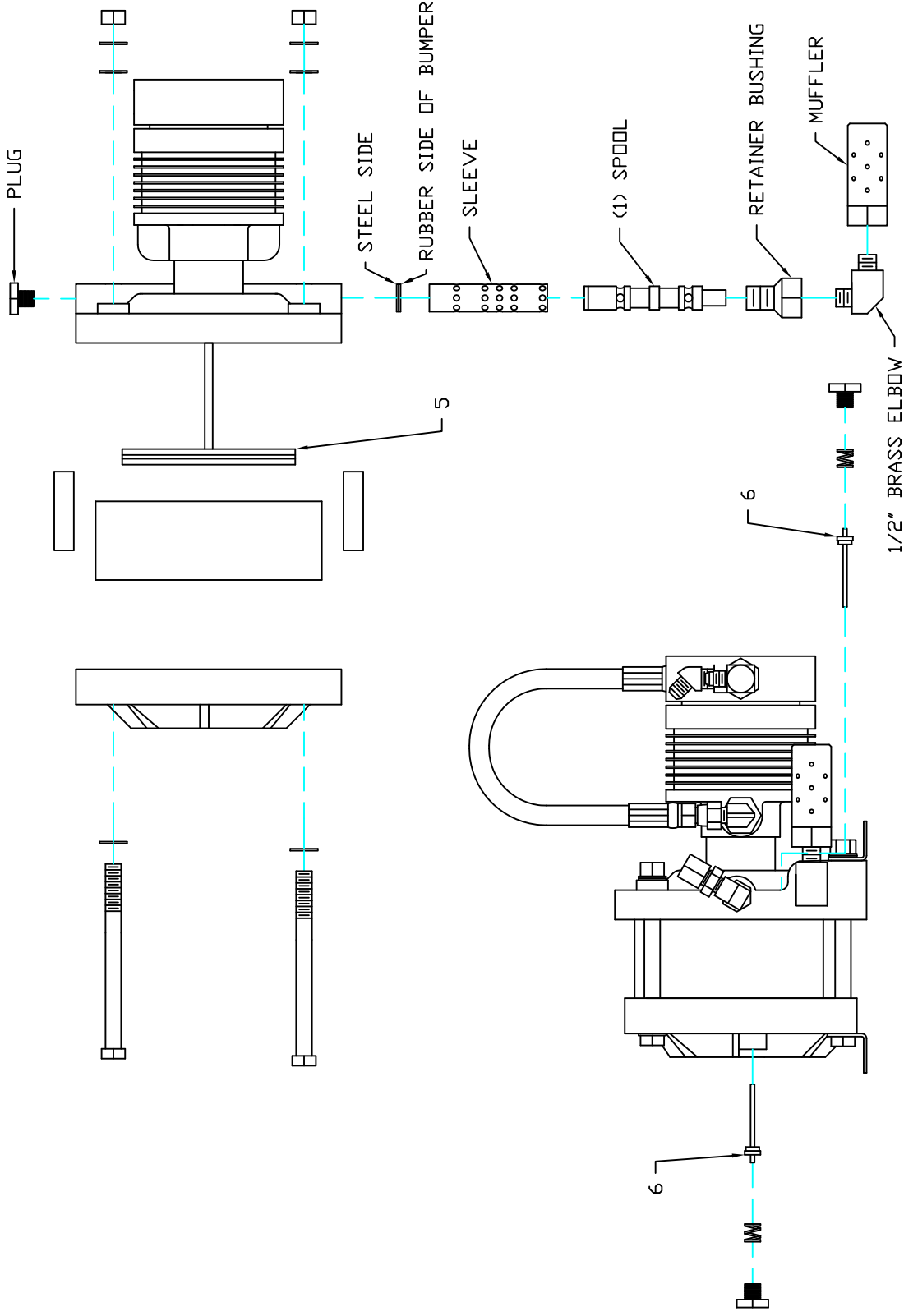
- \*Remove the cap located in the head shown on page 3.
- \*Remove the spring
- \*Using needle nose pliers, remove the pilot stem
- \*Inspect for damage or wear and replace if needed
- \*Apply a light coat of (H) lube
- \*Reassemble

FILTER CHANGE - Kit contents shown on page 6

Item (3) refer to page 5

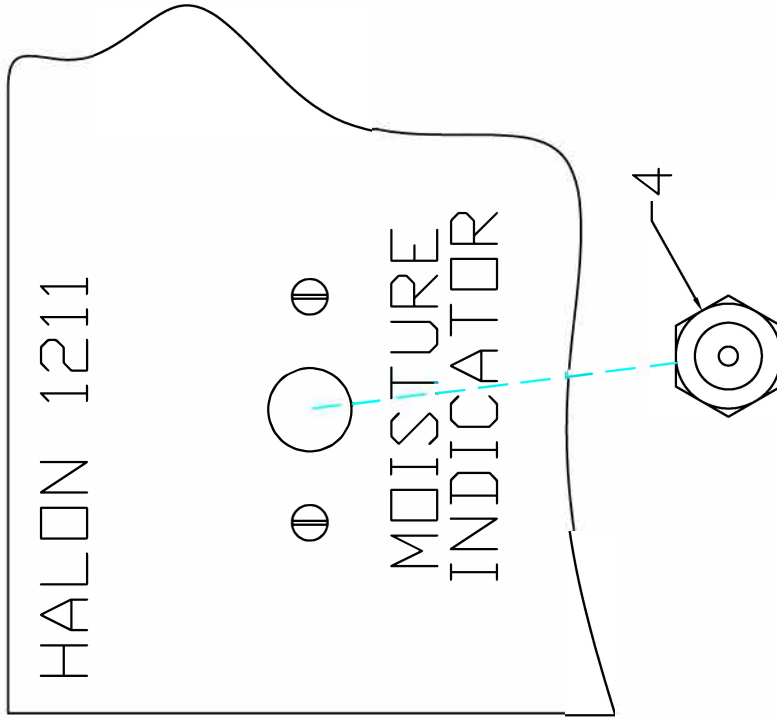
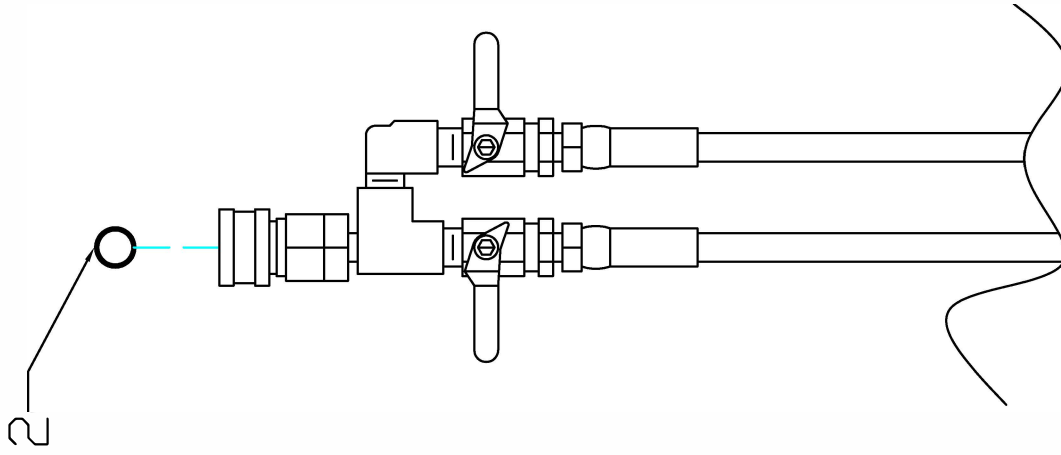
NOTE. DO NOT OPEN FILTERS UNTIL READY TO INSTALL

- \*Remove the bolts from the filter canister and remove the filter assembly
- \*Depress the filters and slide the screws from the slots
- \*Remove the old filters and gaskets
- \*Replace the old gasket with new gaskets found inside the filter containers
- \*Install the new filters (B)
- \*Depress the filters and attach the screws in the slots
- \*Replace the assembly in the canister and tighten bolts in a crisscross pattern

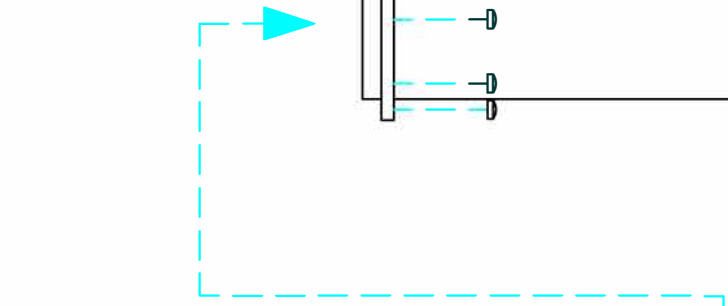
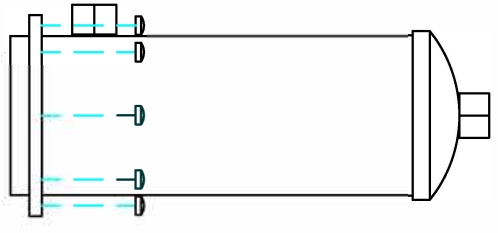
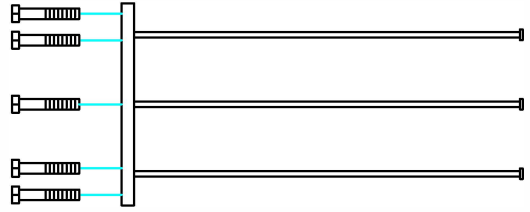
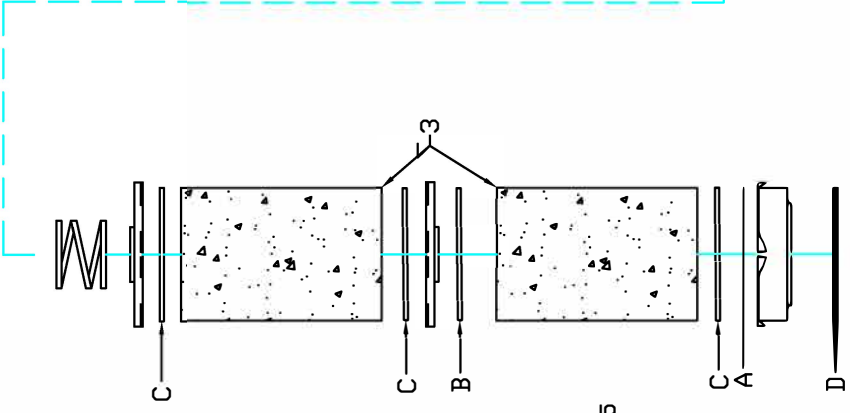
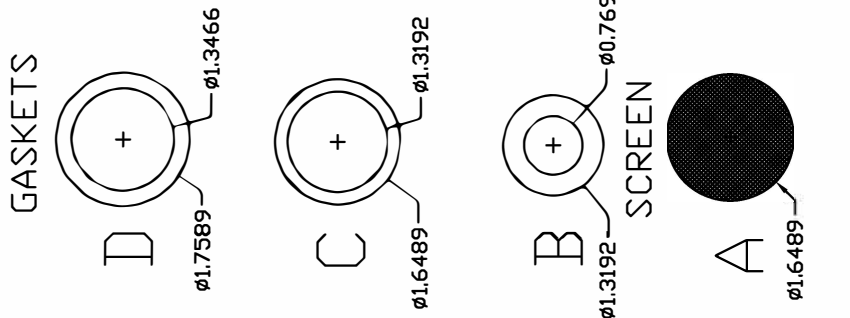


THIS DRAWING IS THE EXCLUSIVE & CONFIDENTIAL PROPERTY OF GETZ EQUIPMENT. IT SHALL NOT BE DUPLICATED, USED OR DISCLOSED TO OTHERS WITHOUT THE EXPRESS WRITTEN CONSENT OF GETZ EQUIPMENT.

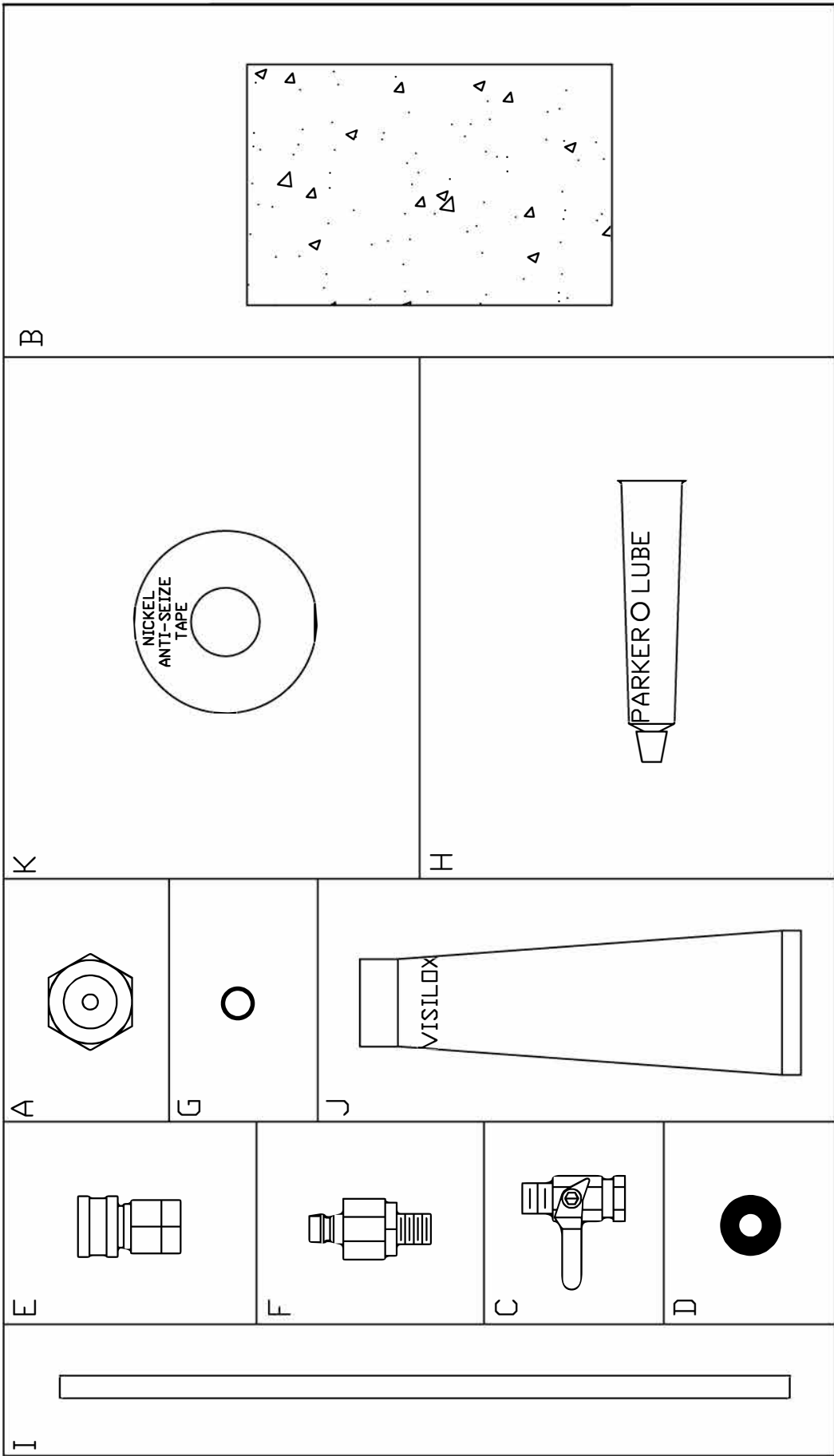
MATERIAL		FINISH		GETZ EQUIPMENT INNOVATORS PEKIN, ILLINOIS		SHEET NO.	BIN NO.
DWN BY JPE		OK'D		TITLE HR-1L SERVICE AND MAINTENANCE		1 OF 4	
SCALE 3/8" = 1"		DATE 8/29/13		DWG. NO.		3G58642	
TOLERANCES UNLESS OTHERWISE SPECIFIED		FRAC. ±.020		REV.		B	
		3 PL DEC ± .003					



REV		DRAWING CHANGE		BY	ECN NO.	DATE	MATERIAL	FINISH	GETZ EQUIPMENT INNOVATORS PEKIN, ILLINOIS		SHEET NO.	BIN NO.
		TOLERANCES UNLESS OTHERWISE SPECIFIED		JPE		8/29/13		OK'D	TITLE		2 OF 4	
FRAC. ±.020		2 PL DEC ±.010		3 PL DEC ±.003	SCALE	DATE	3/8"=1"	8/29/13	HR-1L SERVICE AND MAINTENANCE		DWG. NO.	REV.
											3G58642	B



REV	DRAWING CHANGE	BY	ECN NO.	DATE	MATERIAL	FINISH	GETZ EQUIPMENT INNOVATORS PEKIN, ILLINOIS	SHEET NO. 3 OF 4	BIN NO.
TOLERANCES UNLESS OTHERWISE SPECIFIED					DWN BY JPE	OK'D	TITLE HR-1L SERVICE AND MAINTENANCE	DWG. NO. 3G58642	REV. B
FRAC.	$\pm .020$	2 PL DEC $\pm .010$	3 PL DEC $\pm .003$		SCALE 3/8" = 1"	DATE 8/29/13			



DRAWING CHANGE		BY	ECN NO.	DATE	MATERIAL	FINISH	GETZ EQUIPMENT INNOVATORS PEKIN, ILLINOIS		SHEET NO.	BIN NO.
TOLERANCES UNLESS OTHERWISE SPECIFIED					DWN BY JPE	OK'D			4 OF 4	
FRAC. ±.020	2 PL DEC ±.010				SCALE 3/8" = 1"	DATE 8/29/13	TITLE HR-1L SERVICE AND MAINTENANCE		DWG. NO.	REV.
									3G58642	B