



**GETZ EQUIPMENT  
PART NO. 3G59407  
ROLLER INSTALLATION GUIDE  
W/MOUNTING HOLE TEMPLATE**



2320 Lakecrest Drive, Pekin, Illinois 61554  
Telephone: 888-747-4389 Fax: 309-495-0625  
Website: [www.getzequipment.com](http://www.getzequipment.com)

## Limited Warranty

Products manufactured by Getz Equipment Innovators (with exception of electrical products or components) will be free from defects for a period of one year from shipment date. Electrical products and/or components used in manufactured products will have a (6) month warranty from shipment date. During the warranty period, customers who experience any manufacture-related service issues with our products, the product may be returned for repair or replacement. Customer must contact Getz Equipment for approval prior to any product return. Notwithstanding the foregoing, the limited warranty set forth shall be immediately void of customer uses any replacement parts other than those provided by Getz Equipment Innovators. The warranty does not cover normal wear and tear items, defects resulting from modification, alteration, misuse, exposure to corrosive conditions, extremely high temperatures, improper installation or maintenance. Warranties on component items not manufactured by Getz Equipment Innovators are provided by others whose warranty, evaluation and judgment will be final.

All implied warranties, including, but not limited to, warranties of fitness for purpose and merchantability, are limited to the time periods as stated above. In no event shall Getz Equipment Innovators be liable to incidental or consequential damages. Some states do not allow limitations on how long an implied warranty lasts or the exclusions or limitation of incidental or consequential damages, so that the above limitations or exclusions may not apply to you. Getz Equipment Innovators neither assumes nor authorizes any representative or other person to assume for it any obligation or liability other than as expressly set forth herein.

### Mobile Service Vehicles:

The warranty does not cover:

- Defects in the chassis and or power unit
- Defects in separately manufactured products not produced by Getz Equipment Innovators
- Deterioration due to normal wear, tear, and exposure
- Repairs made necessary by negligent use, misuse, abuse, loading the service vehicle beyond its gross vehicle weight limitations, accident, acts of God, or other contingencies beyond the control of Getz Equipment Innovators.
- Repairs deemed necessary by reason of the failure to follow ordinary maintenance procedures.
- Repairs deemed necessary by reason of alterations done without Getz Equipment Innovators' written approval.

### Warranty Service:

- All warranty repairs will be performed by Getz Equipment Innovators in Pekin, IL, unless otherwise authorized by Getz Equipment Innovators.

### Freight:

- Getz Equipment Innovators will not be liable for shipping or transportation charges to or from customer's location.

This warranty gives you specific legal rights, and you may also have other rights which vary from state to state. To obtain performance to the obligation of the warranty, write to Getz Equipment Innovators, 2320 Lakecrest Drive, Pekin IL 61554, USA for instructions.

## ROLLER INSTALLATION GUIDE

This guide is provided to aid in the roller installation on the Getz pneumatic belt vise. A template and drilling instructions have been provided for installation on older vises. Follow steps 1 - 4. ***Follow all company safety rules.***

On newer vises the holes are provided. Follow step 4.

### Step 1

Mark the holes by taping the provided template in place. Be sure the paper sits square in the corner and follows the front edge of the vise. Using a center punch, mark each hole thru the template crosshairs and remove the template.

### Step 2

Before drilling, measure the center punch marks. Dimensions are located on page (3) as well as on the template.

### Step 3

Drill your holes using a 1/8" drill bit for a pilot hole. This will help hold the dimension. Using a 5/16" bit, drill your holes and remove all sharp edges.

### Step 4

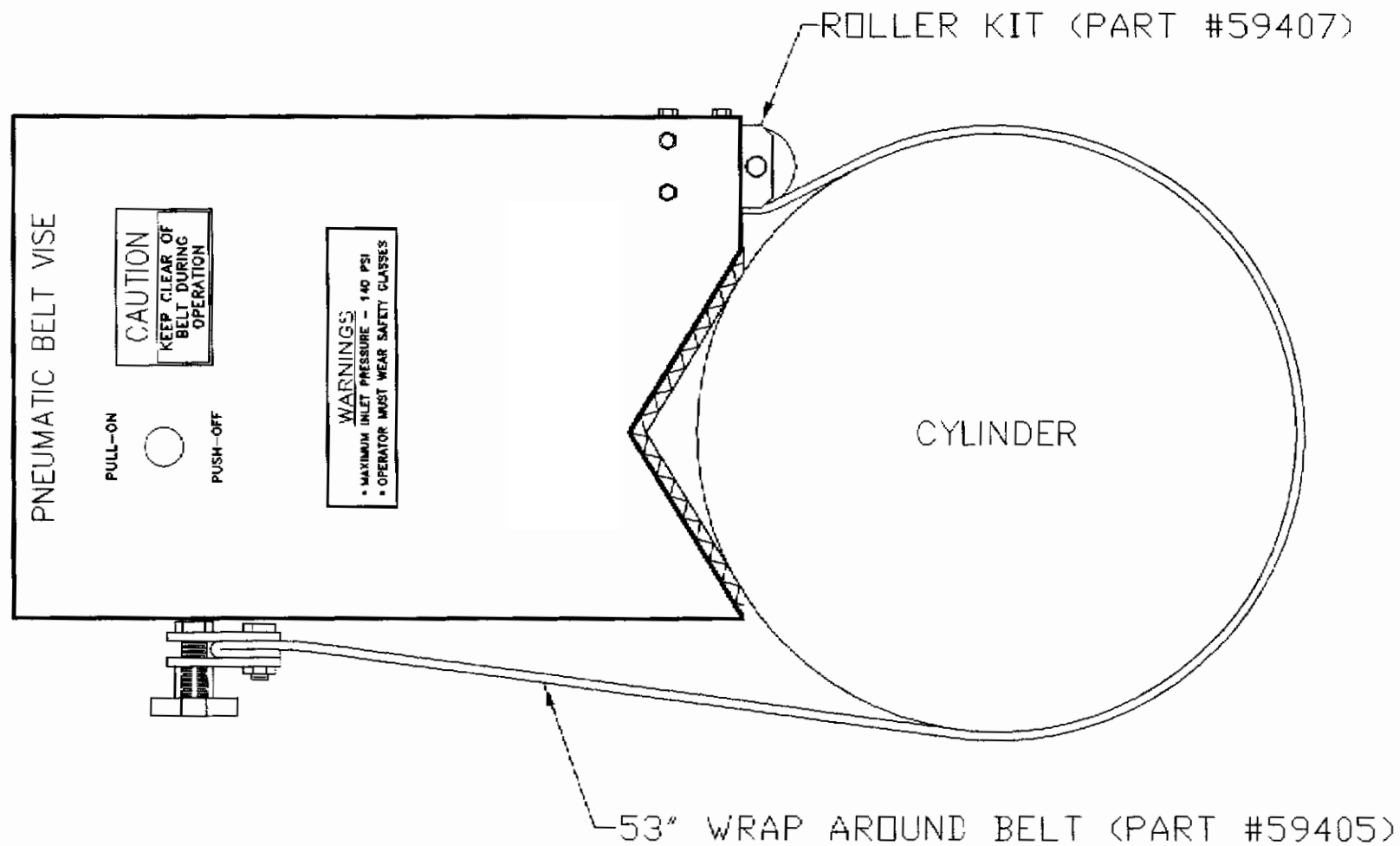
Install brackets # 3 and # 4 as shown on page (4) of this guide.

Put the shaft of item # 1 thru the bottom bracket item # 3. Raise item # 1 and guide the shaft thru the top bracket item # 4. Hold in place and tighten the set screws in items # 3 and # 4.

## BELT CHANGE

Item # 1 must be removed to change the restraining belt. Remove the nut # 6, install the belt, and replace item # 1.

# TOP VIEW



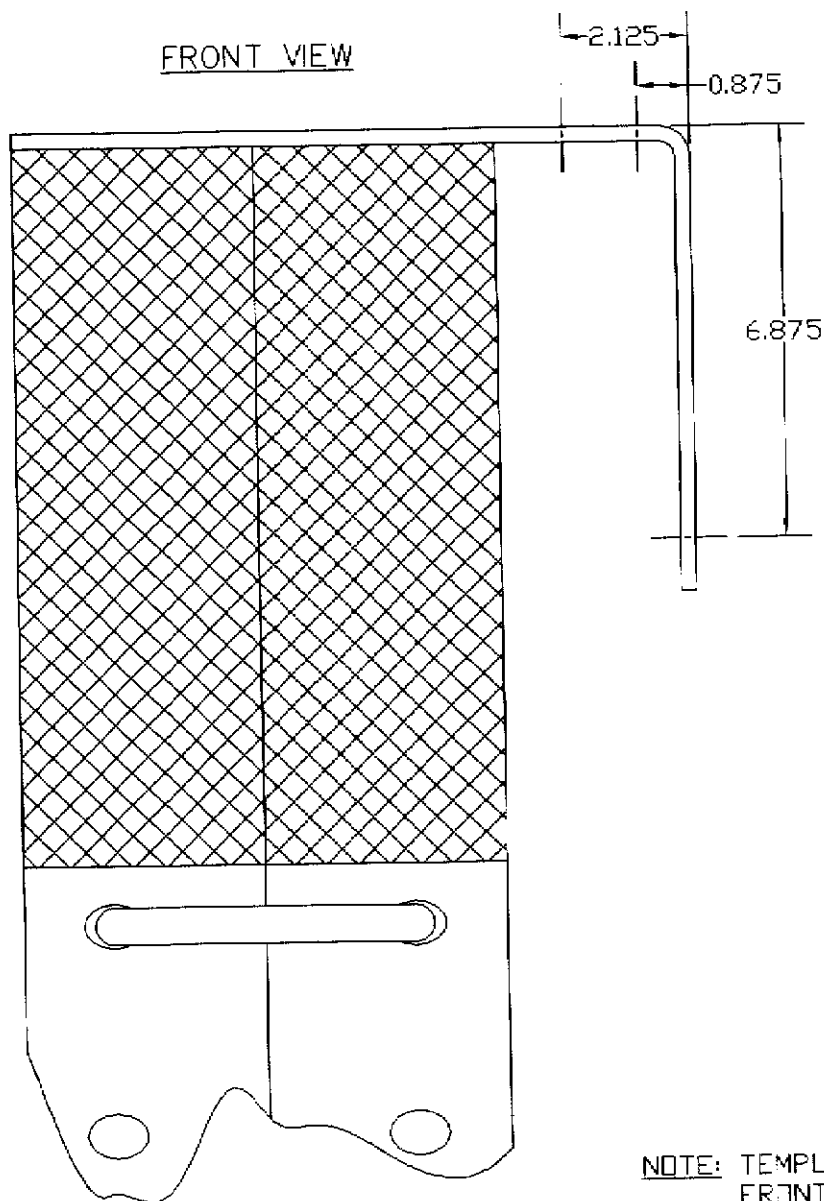
PAGE 2

THIS DRAWING IS THE EXCLUSIVE AND CONFIDENTIAL PROPERTY OF PITS & MO. IT SHALL NOT BE REPRODUCED, COPIED, OR TRANSMITTED IN ANY FORM OR BY ANY MEANS, ELECTRONIC OR MECHANICAL, INCLUDING PHOTOCOPYING, RECORDING, OR BY ANY INFORMATION STORAGE AND RETRIEVAL SYSTEM, WITHOUT THE EXPRESS WRITTEN CONSENT OF PITS & MO MANUFACTURING.

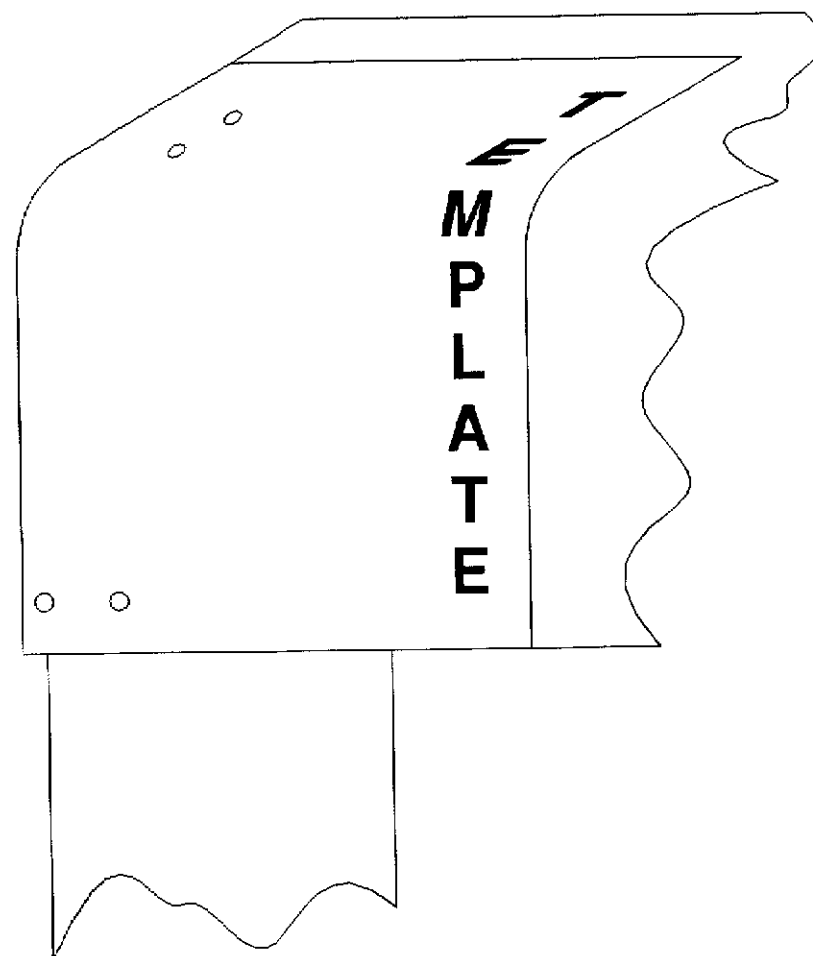
REV		DRAWING CHANGE		IS	CON NO.	DATE	DESIGNED BY	DATE	CHK'D BY	DATE	FILE	REV
TOLERANCES UNLESS OTHERWISE SPECIFIED							SCALE	DATE	FILE	KIT ROLLER VISE		REV
FRACTIONAL		2 PL DEC		3 PL DEC			NONE	6-11-03				*
FRACTIONAL		2 PL DEC		3 PL DEC			NONE	6-11-03				*

PART NO.		REV NO.	
2 OF 3			
DWG NO.		REV	
59407-2		*	

FRONT VIEW



RIGHT SIDE VIEW

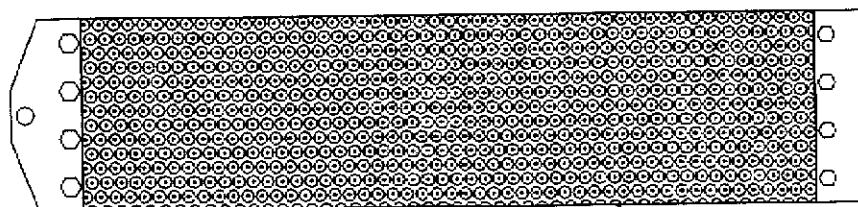


NOTE: TEMPLATE TO BE TAPED DOWN  
FRONT, TOP, & BOTTOM

THIS DRAWING IS THE PROPERTY AND CONFIDENTIAL INFORMATION OF THE U.S. GOVERNMENT. IT IS TO BE KEPT SECRET AND NOT DISCLOSED OR REPRODUCED IN ANY MANNER WITHOUT THE EXPRESS WRITTEN PERMISSION OF THE U.S. GOVERNMENT.			
MATERIAL	FINISH		
DWG. BY R.D.M.	DWG. BY D.C.		
SCALE NONE	DATE 7-14-03	TITLE KIT ROLLER VISE TEMPLATE	

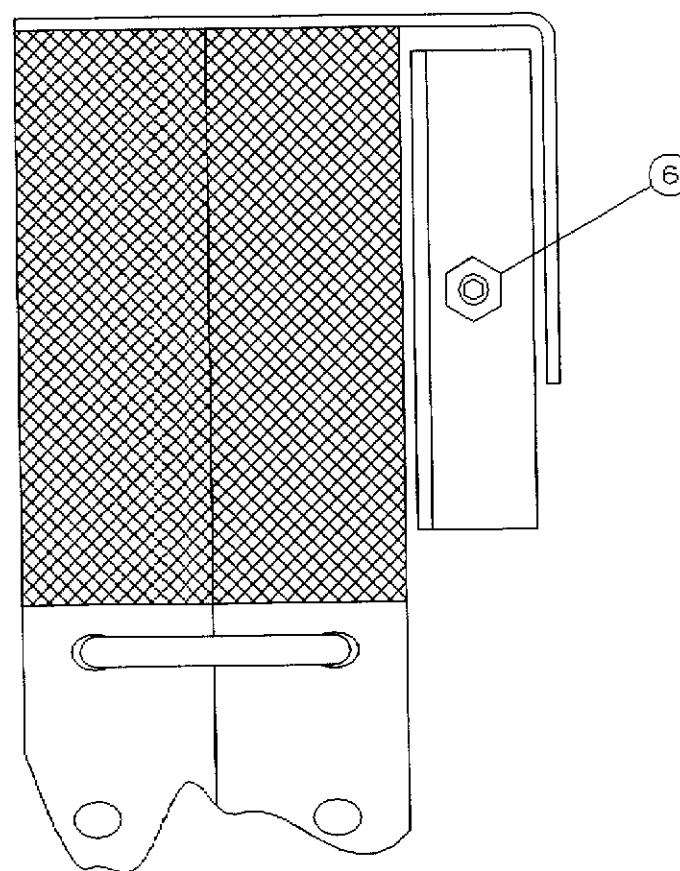
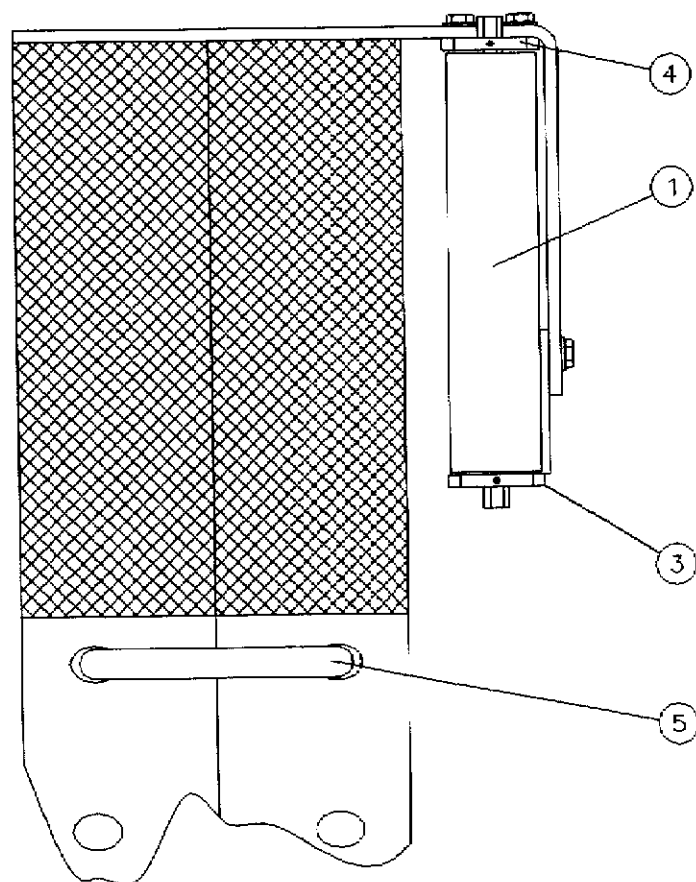
SHEET NO. 1 OF 1	REV.
DWG. NO. 59407-TEMP-A	REV. *

REV.	DRAWING CHANGE	BY	ECN NO.	DATE
TOLERANCES UNLESS OTHERWISE SPECIFIED				
FRACTIONAL ± 0.00	2 PL DEC ± 0.010	3 PL DEC ± 0.003		



2

ITEM	PART#	DESCRIPTION	UM	QPA
1	53602	ROLLER VISE BELT	EA	1.0000
2	59405	BELT 53 WRAP AROUND COMP	EA	1.0000
3	53594	BRACKET LOWER ROLLER	EA	1.0000
4	53595	BRACKET UPPER ROLLER	EA	1.0000
5	5361	HORSE SHOE EXTENDED	EA	1.0000
6	MISC	HEX NUT	EA	1.0000

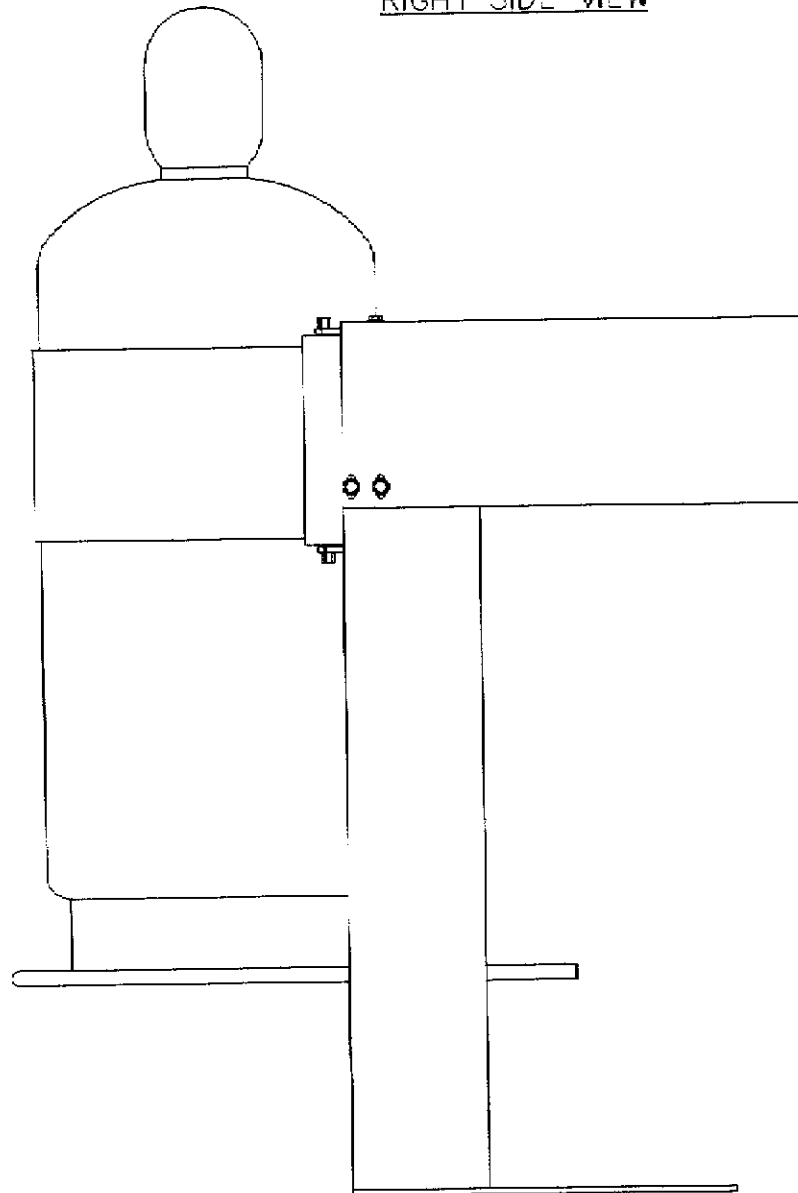


PAGE 4

THIS DRAWING IS THE PROPERTY OF THE U.S. ARMY AND IS NOT TO BE REPRODUCED OR USED IN ANY MANNER WITHOUT THE EXPRESS WRITTEN PERMISSION OF THE U.S. ARMY.			
DATE	REV	BY	APP
5-21-03	1	R.D.M.	D.C.
SCALE	NONE	DATE	5-21-03
TITLE	KIT ROLLER VISE		

3 OF 3	REV.
59407-3	*

# RIGHT SIDE VIEW



PAGE 5

THIS DRAWING IS THE EXCLUSIVE AND CONFIDENTIAL PROPERTY OF DEEZ MFG. IT SHALL NOT BE REPRODUCED, USED, OR DISCLOSED TO OTHERS WITHOUT THE EXPRESS WRITTEN CONSENT OF DEEZ MANUFACTURING.

						MATERIAL	FINISH		DWG. NO.	REV	
									1 OF 3		
REV	DRAWING CHANGE				BY	ECON NO	DATE	DWG. BY R.D.M.	CR'D D.C.		
TOLERANCES UNLESS OTHERWISE SPECIFIED							SCALE NONE	DATE 5-21-03	TITLE KIT ROLLER VISE	DWG. NO. 59407	REV *
FRAC ±.020		2 PL DEC ±.010		3 PL DEC ±.003							

SHEET NO.		SW. NO.	
1 OF 3			
DWG. NO.		REV	
59407		*	

# TEMP PLATE

