

INSTALLING P/N 58962 SELECTOR VALVE REPAIR KIT

1. REMOVE ALL PRESSURE IN SYSTEM PRIOR TO ATTEMPTING INSTALATION

Evacuate all internal pressure in the system. Utilizing a large cylinder that has been pulled to a vacuum will give you the best results, but several smaller cylinders may be used. Verify both the pressure and discharge gauges are indicating a zero pressure reading before proceeding. (REFER TO PAGE 13 OF YOUR OPERATORS MANUAL FOR EVACUATING INTERNAL PRESSURE FROM THE SYSTEM).

2. REMOVING THE SELECTOR VALVE (Refer to drawing 51922 when performing rebuild)

Number or color code the hoses and selector valve fittings before removing valve assembly. Remove the valve handle # 14 and the four panel mount screws securing the valve. (*IMPORTANT*) File the setscrew holes on shaft #3 to remove any burrs or rough edges.

3. DISASSEMBLING THE VALVE

A clean surface will be needed when disassembling the valve. Small component parts for reassembly will be free to fall out and care should be taken when separating the two valve bodies. Remove bolts # 8 and slowly separate # 6 and # 12. DO NOT FORCE # 3 shaft through the valve body #12. File the setscrew hole again if shaft cannot be removed easily. Failure to remove burrs will damage the #12 valve body

4. CLEANING OF COMPONENTS

Clean up all component parts of white corrosion and dirt. Use a small brass wire brush to clean up the four holes in the valve body #6, where the four #1 seats will be reinstalled.

5. REPLACING SEATS AND SEALS

Using an O-ring pick and hook set remove and discard items # 1, 2, 4, and 5. Replace O-ring #4 in housing #12. Place O-rings #2 on seats #1 and apply a thin coat of O-ring lube. Replace seat springs #7 and press seats #1 in valve body #6. Seats #1 must be free to move up and down in the four holes of valve body #6.

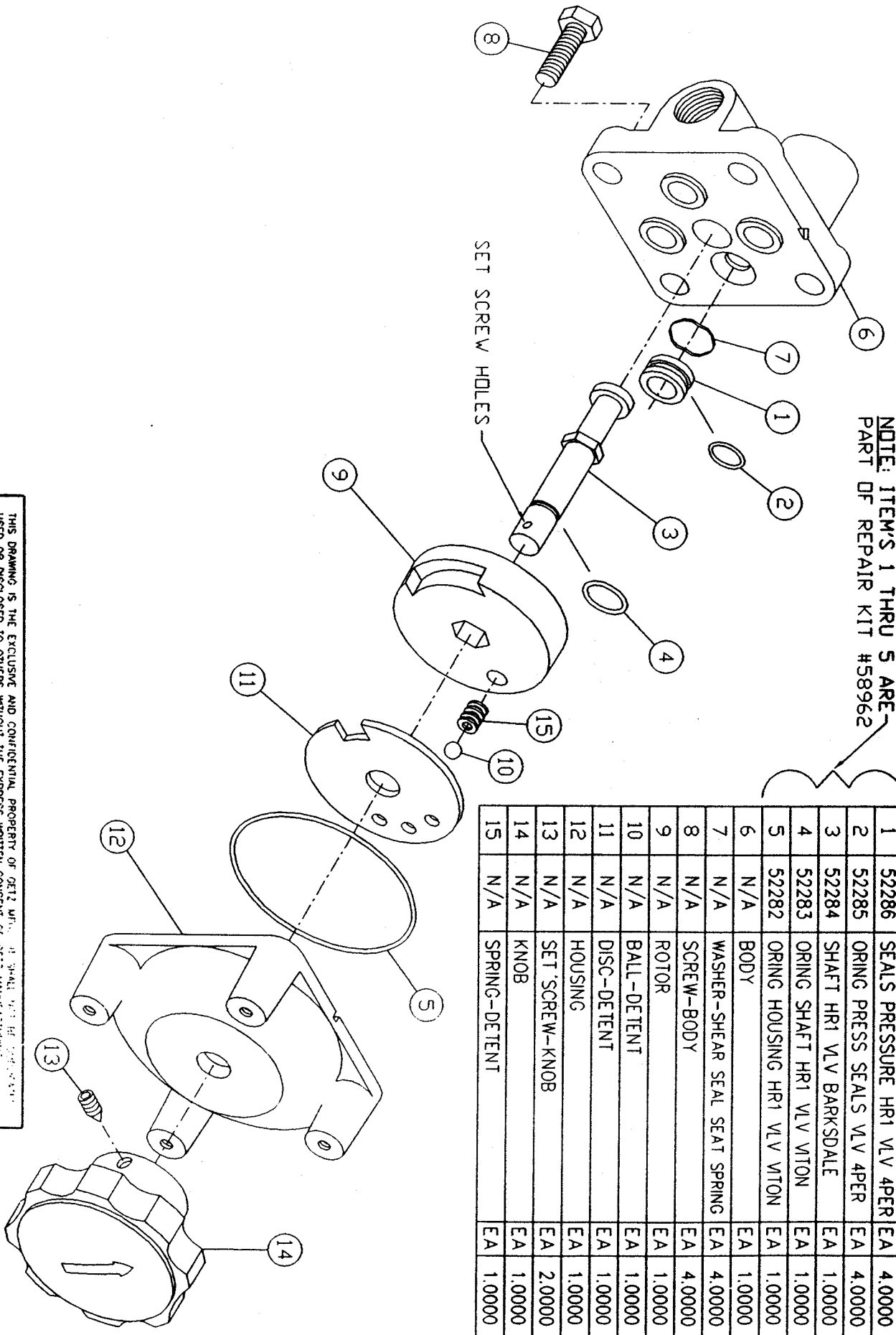
6. REASSEMBLING THE VALVE

Use component break down drawing P/N 51922 when reassembling valve. Place item #12 upside down on a flat surface, so that the inside of the valve body is facing upward. Install the #4 O-ring onto the O-ring groove in shaft #3. Reinstall items #11, 10, 15, and 9 as shown on drawing, making sure item #10 is located in the center hole of item #11. Install the O-ring # 5 into the internal groove of body #12; a thin coat of O-ring lube will help hold the O-ring in place. Hold items #9, 11 and 12 into place as you install shaft #3 through items 9, 11 and 12. Setscrew holes in item #3 shaft must be parallel to the timing mark on valve body #12. Reassemble the lower valve body #6 onto the upper valve body #12. Align the marks stamped into the upper and lower valve body #6 and #12. Secure the valve bodies together with the four bolts #8.

7. INSTALLING VALVE ASSEMBLY

Reinstall the valve assemble into system, align color-coded or numbered hoses to the fittings on valve assemble. Secure valve to the system with the four panel mount screws and reinstall the item #14 valve handle back onto the valve shaft item #3. Make sure to align set screws in valve handle with set screw holes in shaft.

NOTE: ITEMS 1 THRU 5 ARE PART OF REPAIR KIT #58962



| ITEM | PART# | DESCRIPTION | UM | QPA |
|------|-------|-------------------------------|----|--------|
| 1 | 52286 | SEALS PRESSURE HR1 VLV 4PER | EA | 4.0000 |
| 2 | 52285 | ORING PRESS SEALS VLV 4PER | EA | 4.0000 |
| 3 | 52284 | SHAFT HR1 VLV BARKSDALE | EA | 1.0000 |
| 4 | 52283 | ORING SHAFT HR1 VLV VITON | EA | 1.0000 |
| 5 | 52282 | ORING HOUSING HR1 VLV VITON | EA | 1.0000 |
| 6 | N/A | BODY | EA | 1.0000 |
| 7 | N/A | WASHER-SHEAR SEAL SEAT SPRING | EA | 4.0000 |
| 8 | N/A | SCREW-BODY | EA | 4.0000 |
| 9 | N/A | ROTOR | EA | 1.0000 |
| 10 | N/A | BALL-DETENT | EA | 1.0000 |
| 11 | N/A | DISC-DETENT | EA | 1.0000 |
| 12 | N/A | HOUSING | EA | 1.0000 |
| 13 | N/A | SET SCREW-KNOB | EA | 2.0000 |
| 14 | N/A | KNOB | EA | 1.0000 |
| 15 | N/A | SPRING-DETENT | EA | 1.0000 |

THIS DRAWING IS THE EXCLUSIVE AND CONFIDENTIAL PROPERTY OF GETZ MFG. CO. AND SHALL NOT BE REPRODUCED OR USED OR DISCLOSED TO OTHERS WITHOUT THE EXPRESS WRITTEN CONSENT OF GETZ MANUFACTURING.

| | | | | | | | | | | | | | | | |
|---------------------------------------|--|------------------------|---------|-----------------|--------|-----------------|--------------------|-------------|--------|------------------------|--|---------|---------|-------|--|
| A | | ROTATED ITEMS #9 & #11 | | R | M | 1/15 | MATERIAL | | FINISH | TITLE | | SCALE | DATE | REV | |
| DRAWING CHANGE | | BY | ECN NO. | DATE | DWN BY | CR'D | GETZ MANUFACTURING | | K.L.R. | VLV MANUAL 4 WAY VITON | | 1/2"=1' | 8-12-98 | 51922 | |
| TOLERANCES UNLESS OTHERWISE SPECIFIED | | FRAC. ± 0.20 | | 2 PL DEC ± 0.10 | | 3 PL DEC ± .003 | | PEORIA, IL. | | 1 OF 1 | | 51922 | | A | |