



**GETZ EQUIPMENT INNOVATORS**

**PART # 3G59339**

**DELTA DRYER**



2320 Lakecrest Drive, Pekin IL 61554  
PH. (888) 747-4389 • Fax (309) 495-0625  
Website: [www.getzequipment.com](http://www.getzequipment.com)

## LIMITED WARRANTY

Getz Equipment Innovators warrants its products, and component parts of any product manufactured by Getz Equipment Innovators, to be free from defects in material and workmanship for a period of twelve (12) months from the date of purchase. During the warranty period, any such defects will be repaired or the defective parts replaced **(at Getz Equipment Innovators' option)**. The warranty does not cover defects resulting from modification, alteration, misuse, exposure to corrosive conditions, extremely high temperatures, improper installation or maintenance. Warranties on component items not manufactured by Getz Equipment Innovators are provided by others whose warranty, evaluation and judgment will be final.

All implied warranties, including, but not limited to, warranties of fitness for purpose and merchantability, are limited to the time periods as stated above. In no event shall Getz Equipment Innovators be liable to incidental or consequential damages. Some states do not allow limitations on how long an implied warranty lasts or the exclusions or limitation of incidental or consequential damages, so that the above limitations or exclusions may not apply to you. Getz Equipment Innovators neither assumes nor authorizes any representative or other person to assume for it any obligation or liability other than as expressly set forth herein.

### **Mobile Service Vehicles:**

The warranty does not cover:

- Defects in the chassis and or power unit
- Defects in separately manufactured products not produced by Getz Equipment Innovators
- Deterioration due to normal wear, tear, and exposure
- Repairs made necessary by negligent use, misuse, abuse, loading the service vehicle beyond its gross vehicle weight limitations, accident, acts of God, or other contingencies beyond the control of Getz Equipment Innovators.
- Repairs deemed necessary by reason of the failure to follow ordinary maintenance procedures.
- Repairs deemed necessary by reason of alterations done without Getz Equipment Innovators' written approval.

Warranty Service:

- All warranty repairs will be performed by Getz Equipment Innovators in Pekin, IL, unless otherwise authorized by Getz Equipment Innovators.

Freight:

- Getz Equipment Innovators will not be liable for shipping or transportation charges to or from customer's location.

This warranty gives you specific legal rights, and you may also have other rights which vary from state to state. To obtain performance to the obligation of the warranty, write to Getz Equipment Innovators, 2320 Lakecrest Drive, Pekin IL 61554, USA for instructions.

## INTRODUCTION

The P/N 59339 cylinder dryer is an inexpensive, lightweight alternative to rack style dryers. It is portable and plugs into a normal 120VAC receptacle. Up to four cylinders can be dried at one time.

## SYSTEM REQUIREMENTS

120VAC  
15 Amps  
60 Hertz

## TABLE OF CONTENTS

1. Introduction / System Requirements
2. Operating instructions
3. Parts list / Pictorial drawing
4. Troubleshooting

## OPERATING INSTRUCTIONS

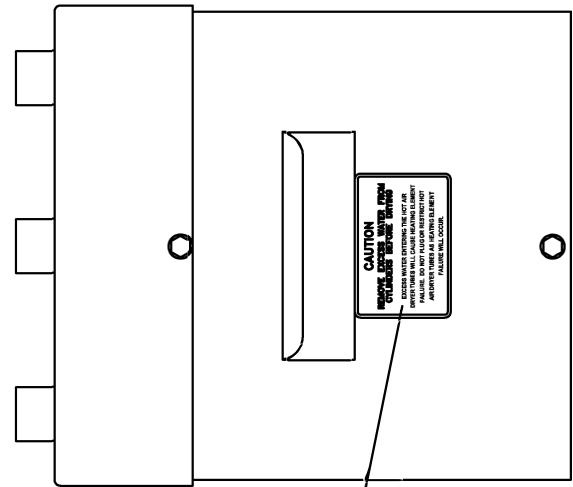
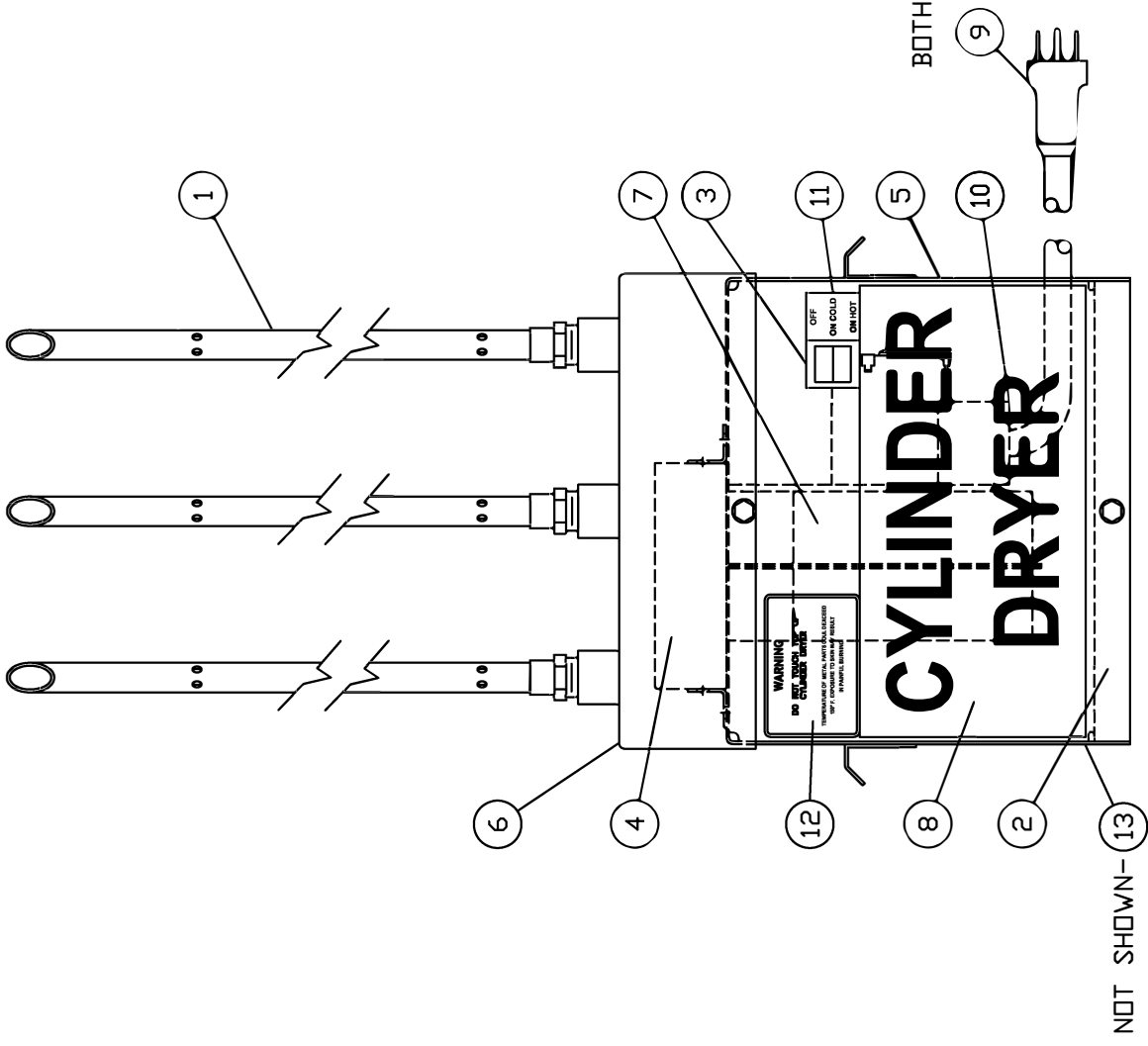
1. Empty as much water as possible from the extinguisher or extinguishers that will need to be dried. If available, blow any excess water out of the inside of the extinguisher with either an air compressor or compressed air and a blowgun, this will reduce drying time.

2. Place the cylinder dryer switch #3 in the (on hot) position, this will start the blower and activate the heating element at the same time. Warm air will start to flow out of the dryer tubes (Item 1) or optional large tube (Item 15).

3. Place the extinguisher or extinguishers to be dried on the copper tubes (Item 1) or large dryer tube (Item 15). Drying time will vary with the size and wall thickness of the extinguisher being dried. **EXTINGUISHERS WILL BE HOT! GLOVES SHOULD BE WORN WHEN REMOVING EXTINGUISHERS FROM DRYER.**

4. After removing any remaining extinguishers for the day, place the (Item 3) switch to the (on cold) position. This will allow the blower to cool down the heating element, prolonging the life of the element. Run the blower in the (on cold) position for five minutes before placing the (Item 3) switch in the off position.

ITEM	PART#	DESCRIPTION	UM	QPA
1	3G59401	TUBE AIR 1/2 DELTA DRYER	EA	5.0000
2	1G53381	BOTTOM DRYER DELTA	EA	1.0000
3	1G53901	SWITCH ROCKER 15AMP	EA	1.0000
4	3G59453	KIT ELEMENT DELTA	EA	1.0000
5	1G53350	BASE DRYER DELTA	EA	1.0000
6	1G53351	TOP DRYER DELTA	EA	1.0000
7	1G53349	BLOWER DAYTON DELTA	EA	1.0000
8	1G53552	LABEL CYLINDER DRYER DELTA	EA	1.0000
9	1G53391	CORD DRYER DELTA	EA	1.0000
10	1G51228	CONN 2 SCREW	EA	1.0000
11	1G53423	LABEL ON OFF DRYER DELTA	EA	1.0000
12	1G53497	LABEL CAUTION DELTA DRYER	EA	1.0000
13	1G51292	DECAL SERIAL NUMBER	EA	1.0000
14	1G53948	LABEL WARNING DELTA DRYER	EA	2.0000



THIS DRAWING IS THE EXCLUSIVE AND CONFIDENTIAL PROPERTY OF GETZ EQ. IT SHALL NOT BE DUPLICATED, USED OR DISCLOSED TO OTHERS WITHOUT THE EXPRESS WRITTEN CONSENT OF GETZ EQUIPMENT		SHEET NO. 1 OF 1		BIN NO.	
GETZ EQUIPMENT		DWG. NO. 3G59339-M		REV.	
MATERIAL		FINISH		TITLE	
DWN BY R.D.M.		OK'D D.C.		PEKIN, IL	
DATE		DATE		8-15-01	
SCALE 1/4"=1"		TOLERANCES UNLESS OTHERWISE SPECIFIED		FRAC. ±.020 2 PL DEC ±.010 3 PL DEC ±.003	
DRAWING CHANGE		BY		ECN NO.	

# TROUBLESHOOTING

**WARNING:** A qualified electrician should only repair this equipment.

Problem	Solution
Blower motor not working.	<ol style="list-style-type: none"><li>1. Check for tripped breaker</li><li>2. Defective switch #3 (replace)</li><li>3. Defective blower #7 (replace)</li></ol>
<hr/>	
Blows only cold air	<ol style="list-style-type: none"><li>1. Check switch position</li><li>2. Broken heating element #4 (replace)</li><li>3. Lose connection (tighten)</li></ol>
<hr/>	