



GETZ EQUIPMENT INNOVATORS

PART # 3G59339

COMPACT DRYER 5 POST



2320 Lakecrest Drive, Pekin, Illinois 61554
Telephone: 888-747-4389 Fax: 309-495-0625
Website: www.getzequipment.com

Limited Warranty

Products manufactured by Getz Equipment Innovators (with exception of electrical products or components) will be free from defects for a period of one year from shipment date. Electrical products and/or components used in manufactured products will have a (6) month warranty from shipment date. During the warranty period, customers who experience any manufacture-related service issues with our products, the product may be returned for repair or replacement. Customer must contact Getz Equipment for approval prior to any product return. Notwithstanding the foregoing, the limited warranty set forth shall be immediately void of customer uses any replacement parts other than those provided by Getz Equipment Innovators. The warranty does not cover normal wear and tear items, defects resulting from modification, alteration, misuse, exposure to corrosive conditions, extremely high temperatures, improper installation or maintenance. Warranties on component items not manufactured by Getz Equipment Innovators are provided by others whose warranty, evaluation and judgment will be final.

All implied warranties, including, but not limited to, warranties of fitness for purpose and merchantability, are limited to the time periods as stated above. In no event shall Getz Equipment Innovators be liable to incidental or consequential damages. Some states do not allow limitations on how long an implied warranty lasts or the exclusions or limitation of incidental or consequential damages, so that the above limitations or exclusions may not apply to you. Getz Equipment Innovators neither assumes nor authorizes any representative or other person to assume for it any obligation or liability other than as expressly set forth herein.

Mobile Service Vehicles:

The warranty does not cover:

- Defects in the chassis and or power unit
- Defects in separately manufactured products not produced by Getz Equipment Innovators
- Deterioration due to normal wear, tear, and exposure
- Repairs made necessary by negligent use, misuse, abuse, loading the service vehicle beyond its gross vehicle weight limitations, accident, acts of God, or other contingencies beyond the control of Getz Equipment Innovators.
- Repairs deemed necessary by reason of the failure to follow ordinary maintenance procedures.
- Repairs deemed necessary by reason of alterations done without Getz Equipment Innovators' written approval.

Warranty Service:

- All warranty repairs will be performed by Getz Equipment Innovators in Pekin, IL, unless otherwise authorized by Getz Equipment Innovators.

Freight:

- Getz Equipment Innovators will not be liable for shipping or transportation charges to or from customer's location.

This warranty gives you specific legal rights, and you may also have other rights which vary from state to state. To obtain performance to the obligation of the warranty, write to Getz Equipment Innovators, 2320 Lakecrest Drive, Pekin IL 61554, USA for instructions.

TABLE OF CONTENTS

1. Introduction
2. System Requirements/Operating instructions
3. Parts list / Pictorial drawing
4. Troubleshooting

INTRODUCTION

The P/N 59339 cylinder dryer is an inexpensive, lightweight alternative to rack style dryers. It is portable and plugs into a normal 120VAC receptacle. Up to five cylinders can be dried at one time.

SYSTEM REQUIREMENTS

120VAC
15 Amps
60 Hertz

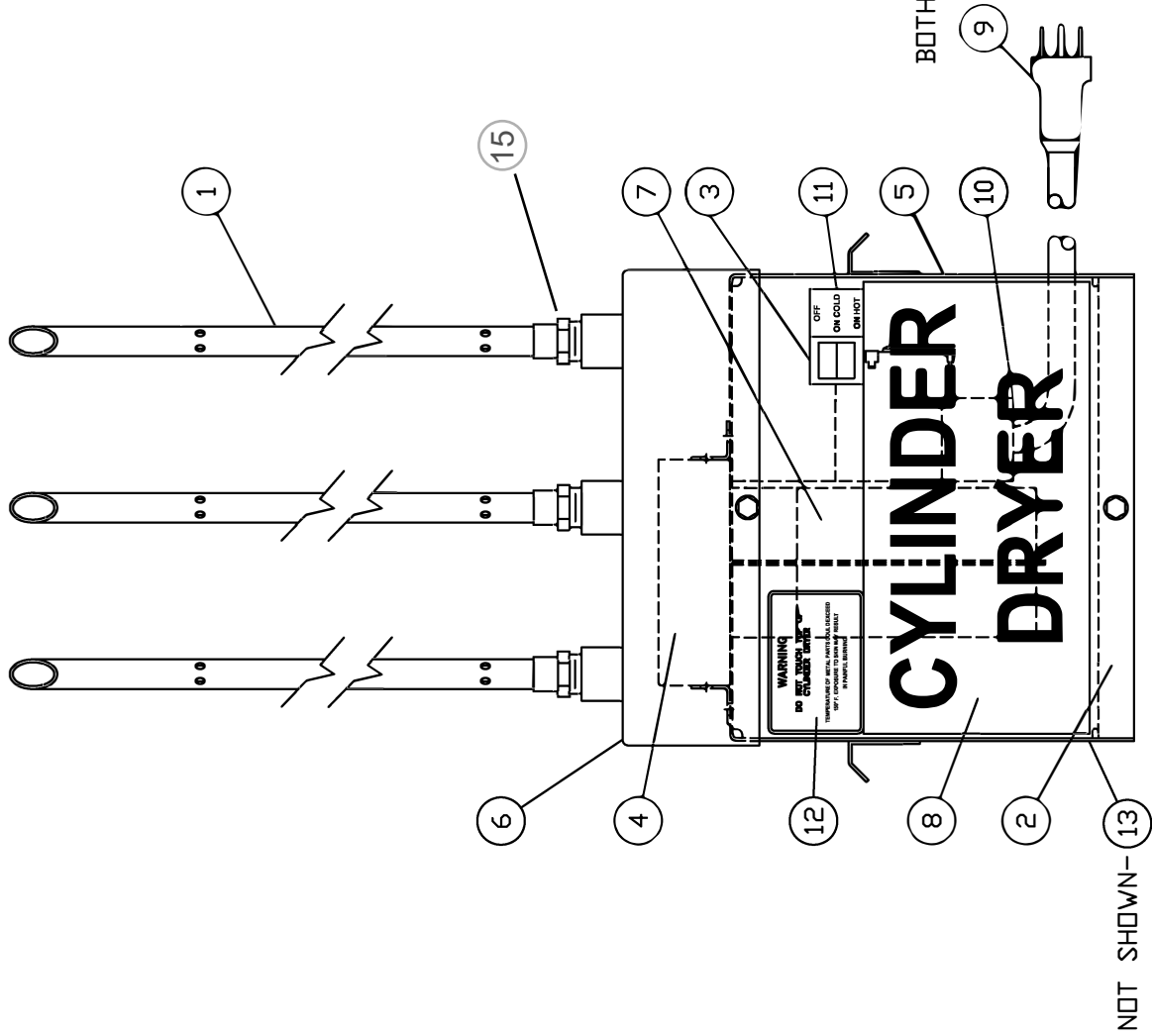
This dryer requires a dedicated 15 amp 120 volt outlet. A dedicated circuit has it's very own circuit breaker and it only supports one outlet.

FAILURE TO USE A DEDICATED 15 AMP OUTLET WILL CAUSE DAMAGE TO THE HEATING ELEMENT!

OPERATING INSTRUCTIONS

1. Empty as much water as possible from the extinguisher or extinguishers that will need to be dried. If available, blow any excess water out of the inside of the extinguisher with either an air compressor or compressed air and a blowgun, this will reduce drying time.
2. Place the cylinder dryer switch in the (on hot) position, this will start the blower and activate the heating element at the same time. Warm air will start to flow out of the dryer tubes.
3. Place the extinguisher or extinguishers to be dried on the tubes. Drying time will vary with the size and wall thickness of the extinguisher being dried, how much water is left inside the cylinder as well as ambient temperature. **EXTINGUISHERS WILL BE HOT! GLOVES SHOULD BE WORN WHEN REMOVING EXTINGUISHERS FROM DRYER.**
4. Dryer blower should be ran thru a cool down cycle with every 3 hours of use. After 3 hours, please turn the blower switch into the cold position and run for 20 minutes. This process will also need to be followed when done using dryer for any period of time. This process will help prolong the life of your heating element.

ITEM	PART#	DESCRIPTION	UM	QPA
1	3G0205	TUBE COMPACT DRYER	EA	5.0000
2		N/A		
3	1G53901	SWITCH ROCKER 15AMP	EA	1.0000
4	3G59453	KIT ELEMENT	EA	1.0000
5	1G53350	BASE DRYER	EA	1.0000
6	1G53351	TOP DRYER	EA	1.0000
7	1G53349	BLOWER DAYTON	EA	1.0000
8		LABEL CYLINDER DRYER	EA	1.0000
9	1G53391	CORD DRYER	EA	1.0000
10	1G51228	CONN 2 SCREW	EA	1.0000
11		LABEL ON OFF DRYER	EA	1.0000
12		LABEL CAUTION DRYER	EA	1.0000
13	1G0169	DECAL SERIAL NUMBER	EA	1.0000
14		LABEL WARNING DRYER	EA	2.0000
15	1G0269	1/2" X 3/8" BRASS REDUCER	EA	1.0000



THIS DRAWING IS THE EXCLUSIVE AND CONFIDENTIAL PROPERTY OF GETZ EQ. IT SHALL NOT BE DUPLICATED, USED OR DISCLOSED TO OTHERS WITHOUT THE EXPRESS WRITTEN CONSENT OF GETZ EQUIPMENT											
						MATERIAL		FINISH		GETZ EQUIPMENT	
REV		DRAWING CHANGE		BY		ECN NO.		DATE		DWN BY R.D.M.	
										OK'D D.C.	
								SCALE 1/4"=1"		DATE 8-15-01	
										TITLE DRYER COMPACT 5 POST	
FRAC. ±.020		2 PL DEC ±.010		3 PL DEC ±.003						DWG. NO. 3G59339-M	
										REV. *	
								SHEET NO. 1 OF 1		BIN NO.	

TROUBLESHOOTING

WARNING: A qualified electrician should only repair this equipment.

Problem	Solution
Blower motor not working.	<ol style="list-style-type: none">1. Check for tripped breaker2. Defective switch (replace)3. Defective blower (replace) <hr/>
Blows only cold air	<ol style="list-style-type: none">1. Check switch position2. Broken heating element (replace)3. Lose connection (tighten) <hr/>